



GOOD MORNING  
Have Good Trading Day

FRIDAY



Price is what you pay.  
Value is what you get.

- Warren Buffet



## MARKET PLUSE

### INDIAN INDICES

NAME	CMP	NET CH.	%
SENSEX	27705	+141	+0.51
NIFTY	8421	+46	+0.56

### INDIAN ADR'S

SYMBOL	CLOSE	GAIN/ LOSS %
DRREDDY	62.00	+5.89
HDFCBANK	61.75	+0.29
ICICIBK	9.60	+2.67
INFY	16.95	-0.29
TATAMOTOR	29.44	+0.79
WIPRO	12.26	-0.24

### FII AND MF ACTIVITY

SYMBOL	In Crs.
FIIs Eq (Provisional)	-170.68
FIIs Index Future	-212.43
FIIs Index Options	-881.40
FIIs Stock Future	-65.27
FIIs Stock Options	10.91
DII's Eq (Provisional)	499.65

### CURRENCY

RBI RATE	30-JULY-2015
RUPEE - \$	64.0061
EURO	70.0739
YEN 10	51.5300
GBP	99.8303

## MARKET PLUSE

### GLOBAL INDICES

NAME	CMP	NET CH.	%
DOW	17745	-5	-0.03
NASDAQ	5128	+17	+0.33
NIKKEI	20525	+2	+0.01
HANG SENG	24579	+81	+0.33
SGX NIFTY	8487	+14	+0.17

### WORLD COMMODITIES

FUTURE	U\$\$	CHANGES
CRUDE	48.22	-0.30
NATURAL GAS	2.778	+0.010
GOLD	1083.7	-5
SILVER	14.645	-0.051
COPPER	2.3795	+0.0025

### WORLD EVENTS

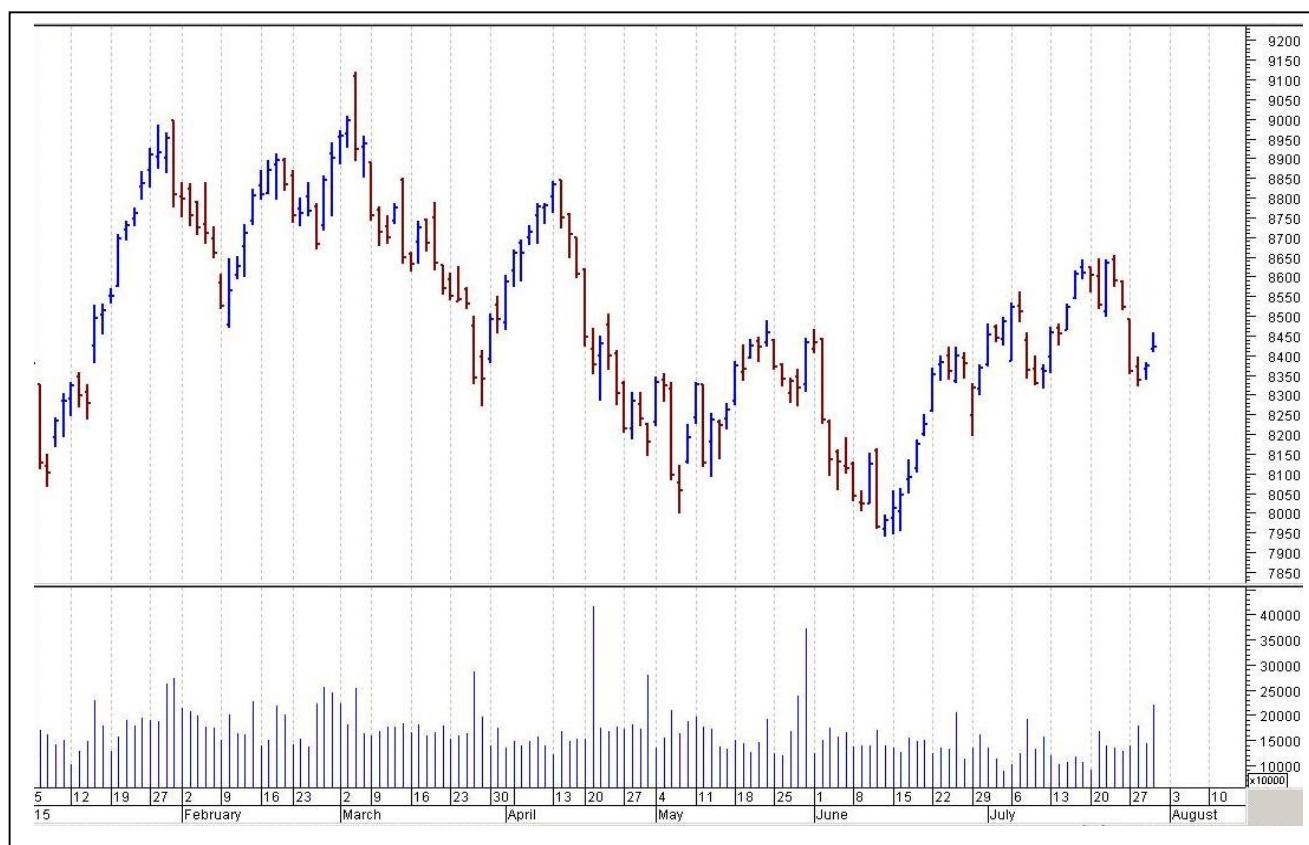
- US: Employment Cost Index q/q
- Chicago PMI
- Revised UoM Consumer Sentiment
- UK:NIL

## TOP STORY

- Kotak Mahindra Bank Q1 Cons Net Profit At `517 Cr Vs `698.3 Cr (YoY). Net NPA At 0.93% Vs 0.79% (QoQ)
- Reliance Communications - Farallon, Blackstone join list of bidders for 50% stake in Reliance Infratel: BS –
- JSW Steel gets shareholders nod to raise `14000 cr (We know about the proposal.
- Thermax plans `460 cr expansion over 2 years in India and Indonesia (BS)
- Vakrangee Announces Strategic Tie Up With Amazon India For Its Kendra Biz -ED
- Registers Money Laundering Case In Antrix-Devas Deal: PTI
- SEBI Issues Show-cause Notice To 32 Entities Of Zylog. Confirms Ban On Zylog Systems' Promoters From Trading In Stock Market.
- Glenmark Pharma Q1 Cons Net Profit At `191 Cr Vs `184.4 Cr (YoY) Cons Revenue At `1,655 Cr Vs `1 487 Cr (YoY)



## NIFTY CHART



## MARKET COMMENTARY

F&O expiry session turned out to be a fabulous day of trade for the Indian equity markets, where frontline gauges garnered gains of over half a percentage point to recapture their crucial 27,700 (Sensex) and 8,400 (Nifty) bastions. Markets traded in green throughout the session as sentiments remained up-beat with reports suggesting that the Union Cabinet has approved amendments to the GST bill to compensate states for revenue loss for five years on introduction of the uniform nationwide indirect tax regime, as has been suggested by Rajya Sabha Select Committee. Some support also came with a statement of World Bank official that India has the potential to become a multi-trillion dollar economy with a per capita income of about \$40,000 by 2050 if it manages to grow at seven percent annually for the next 30-35 years. For today's trade Nifty likely to trade in the range between 8440 - 8460 in the upper side and 8390 – 8370 in the lower side.

### MARKET LEVELS

	CMP	SUPPORT LEVELS				RESISTANCE LEVELS			
NIFTY	8421	8390	8370	8350	8310	8440	8460	8480	8510
USDINR	64.3725	64.28	64.2	64.11	64.05	64.48	64.55	64.6	64.7





### FUTURES CORNER

SCRIPS	CLOSE	SUPPORT	TARGET		REMARKS
		STOP LOSS	T1	T2	
JINDALSTEEL	77.8	76	79.8	81	TRADING CALL
ITC	317.2	312	322	325	TRADING CALL
BATAINDIA	1176.45	1167	1195	1215	TRADING CALL

### EQUITY CORNER

SCRIPS	CLOSE	SUPPORT	TARGET		REMARKS
		STOP LOSS	T1	T2	
RAMCOIND	98.05	95	109	115	TRADING CALL
ALEMBICLTD	50.9	49.5	54	57	TRADING CALL

### DELIVERY BASED CALL / INVESTMENT CALL

SCRIPS	CMP	SUPPORT	TARGET		REMARK
		STOP LOSS	T1	T2	

### BULK DEALS (BSE)

SCRIP	CLIENT NAME	BUY/SELL	QUANTITY	PRICE
OMKARCHEM	CELESTIAL TRADECHEM PRIVATE LIMITED	S	215,000	186.5
OMKARCHEM	DRIEHAUS EMSCGF A SERIES OF DRIEMF	B	504,793	186.5

### BULK DEALS (NSE)

SCRIP	CLIENT NAME	BUY/SELL	QUANTITY	PRICE
OMKARCHEM	DRIEHAUS EMSCGF A SERIES OF DRIEMF	BUY	631409	186.5
OMKARCHEM	CELESTIAL TRADECHEM PRIVATE LIMITED	SELL	398066	186.71

### SCRIP'S IN F&O BAN

(To resume for normal trading below 80% of market wide limit required)

NIL



NIFTY 50 STOCKS: SUPPORT & RESISTANCE						
Symbol	Close	Support 1	Support 2	Pivot Point	Resistance1	Resistance2
ACC	1371.15	1355.03	1340.12	1364.92	1379.83	1389.72
AMBUJACEM	231.05	228.57	223.58	231.73	236.72	239.88
ASIANPAINT	857.55	831.13	815.42	841.97	857.68	868.52
AXISBANK	565.70	563.42	559.63	565.78	569.57	571.93
BAJAJ-AUTO	2527.25	2474.92	2451.98	2494.83	2517.77	2537.68
BANKBARODA	168.60	151.38	149.57	153.07	154.88	156.57
BHARTIARTL	416.95	407.85	398.05	413.90	423.70	429.75
BHEL	286.90	279.23	274.87	282.37	286.73	289.87
BPCL	947.20	938.10	926.90	948.80	960.00	970.70
CAIRN	168.95	164.20	161.25	166.55	169.50	171.85
CIPLA	711.05	669.78	660.02	676.77	686.53	693.52
COALINDIA	420.35	417.57	414.98	420.78	423.37	426.58
DLF	109.70	95.70	89.85	100.05	105.90	110.25
DRREDDY	3913.10	3658.73	3605.12	3721.62	3775.23	3838.12
GAIL	347.80	342.57	338.53	349.13	353.17	359.73
GRASIM	3720.80	3631.87	3607.08	3664.78	3689.57	3722.48
HCLTECH	957.90	933.10	914.85	943.55	961.80	972.25
HDFC	1335.80	1300.70	1289.35	1316.35	1327.70	1343.35
HDFCBANK	1110.55	1102.97	1097.58	1110.43	1115.82	1123.28
HEROMOTOCO	2580.35	2523.77	2477.68	2552.38	2598.47	2627.08
HINDALCO	104.70	105.45	104.35	106.80	107.90	109.25
HINDUNILVR	920.70	891.12	883.03	905.08	913.17	927.13
ICICIBANK	291.00	285.57	281.88	287.73	291.42	293.58
IDFC	152.75	152.82	151.38	153.88	155.32	156.38
INFY	1070.00	1069.60	1053.80	1080.80	1096.60	1107.80
ITC	315.95	299.07	294.13	305.53	310.47	316.93
JINDALSTEL	77.05	74.15	73.15	75.95	76.95	78.75
JPASSOCIAT	9.60	8.53	8.22	9.02	9.33	9.82
KOTAKBANK	716.80	718.97	711.98	728.13	735.12	744.28
LT	1773.75	1760.75	1731.20	1779.60	1809.15	1828.00
LUPIN	1626.85	1605.17	1570.23	1624.98	1659.92	1679.73
M&M	1317.75	1301.37	1287.18	1314.18	1328.37	1341.18
MARUTI	4296.45	4193.43	4113.17	4251.47	4331.73	4389.77
NTPC	135.85	134.20	132.90	135.80	137.10	138.70
ONGC	270.90	265.97	262.18	268.78	272.57	275.38
PNB	151.10	134.38	131.12	138.57	141.83	146.02
POWERGRID	142.40	139.23	138.47	140.27	141.03	142.07
RANBAXY	859.80	822.93	786.07	846.32	883.18	906.57
RELIANCE	1000.15	987.83	979.67	1000.27	1008.43	1020.87
RELINFRA	411.50	382.90	376.55	388.35	394.70	400.15
SBIN	256.80	250.37	247.13	255.53	258.77	263.93
VEDL	129.85	127.28	124.17	130.12	133.23	136.07
SIEMENS	1426.85	1404.62	1358.43	1431.18	1477.37	1503.93
SUNPHARMA	814.25	821.58	813.42	827.82	835.98	842.22
TATAMOTORS	377.45	372.78	369.12	376.37	380.03	383.62
TATAPOWER	69.60	66.50	64.70	68.85	70.65	73.00
TATASTEEL	248.15	248.42	246.28	251.53	253.67	256.78
TCS	2480.65	2488.48	2470.22	2501.77	2520.03	2533.32
ULTRACEMCO	3160.35	3093.77	3051.03	3124.33	3167.07	3197.63
WIPRO	562.00	558.53	552.22	563.27	569.58	574.32



## CORPORATE ACTION / BOARD MEETINGS

NSE Download Ref.No.:NSE/CML/3028:- Suspension of trading in securities of Company Clutch Auto Limited for non-compliance of certain clauses of Listing Agreementw.e.f 11-Aug-2015

NSE Download Ref No :NSE/FAOP/30304:- Exclusion of Futures and Options contracts on JPPOWER wef September 25, 2015

NSE Download Ref.No.: NSE/CML/30372:- Listing of Equity Shares of Adani Transmission Limited pursuant to Scheme of Arrangement wef July 31, 2015

### BOARD MEETINGS

COMPANY NAME	DATE	PURPOSE	RS. PER SH.
LAXMIMACH	31-Jul-15	Annual General Meeting / Dividend	37.5
ALANKIT	31-Jul-15	Annual General Meeting / Dividend	1
KOTHARIPET	31-Jul-15	Annual General Meeting / Dividend	1
GODREJIND	31-Jul-15	Annual General Meeting / Dividend	1.75
TRITURBINE	31-Jul-15	Dividend	0.6
AMBUJACEM	31-Jul-15	Dividend	1.6
ADANIET	31-Jul-15	Annual General Meeting / Dividend	1.4
TATASPONGE	31-Jul-15	Annual General Meeting / Dividend	10
ALLCARGO	31-Jul-15	Annual General Meeting / Dividend	1.4
TATACHEM	31-Jul-15	Annual General Meeting / Dividend	12.5
HERCULES	31-Jul-15	Annual General Meeting / Dividend	1.5
ALEMBICLTD	3-Aug-15	Annual General Meeting / Dividend	0.15
ESABINDIA	3-Aug-15	Annual General Meeting / Dividend	1
CENTUM	3-Aug-15	Annual General Meeting / Dividend	2
EIMCOELECO	3-Aug-15	Annual General Meeting / Dividend	5
DTIL	3-Aug-15	Annual General Meeting / Dividend	7.5
SAKUMA	3-Aug-15	Annual General Meeting / Dividend	1
VSTILLERS	3-Aug-15	Annual General Meeting / Dividend	15
CEATLTD	3-Aug-15	Annual General Meeting / Dividend	10
GRAPHITE	3-Aug-15	Dividend	2
ASTRAL	3-Aug-15	Annual General Meeting / Dividend	0.225
RANEHOLDIN	3-Aug-15	Annual General Meeting / Dividend	7.5

## NEWS & RUMOURS:

- Gold (Spot Dollar) major support = \$1071/\$1042 & Resistance = \$1132/\$1150.
- Crude oil range->\$45 to \$55.
- U.S. Stocks Slip as Facebook Results Disappoint, GDP Strengthens: - U.S. stocks declined as economic growth reinforced a case for higher interest rates, and results from Facebook Inc. and Procter & Gamble Co. disappointed.
- U.S. GDP Rises 2.3% in Second Quarter; First Quarter Revised Upward: - The world's largest economy expanded at a faster pace in the second quarter and managed to eke out a gain at the start of the year, painting a picture on incremental progress consistent with the Federal Reserve's view.
- Jobless Claims in U.S. Climbed Last Week from Four-Decade Low: - Applications for U.S. unemployment benefits rose last week after reaching a four-decade low, consistent with a stronger labor market.
- Oil futures edge higher with global supplies in focus: - Crude oil futures edged higher on Thursday, amid indications that Saudi Arabia could cut production at the end of the summer and following a larger than expected drawdown in U.S. supplies last week.
- Natural gas futures extend losses after storage data: - Natural gas futures extended losses on Thursday, despite data showing that U.S. natural gas supplies rose less than expected last week.
- Dollar, bond yields rise on U.S. rate hike bets: - The dollar jumped and world stocks were left flat-footed on Thursday after the Federal Reserve painted a relatively bright picture of the U.S. economy, boosting bets that it will hike interest rates in September.

## TRENDS & OUTLOOK – DATE: 31- July- 2015

### PRECIOUS METALS:

COMMDITY (MCX)	S2	S1	PIVOT POINT	R1	R2
GOLD (Oct)	24420	24660	24900	25275	25590
SILVER (Sep)	31500	32700	33900	35400	36300

### BASE METALS

COMMDITY (MCX)	S2	S1	PIVOT POINT	R1	R2
COPPER (Aug)	329	333	339	345	349
ZINC (Aug)	120.20	122.70	125.10	128.10	130.30
LEAD (Aug)	105.10	107.55	110.10	112.30	114.75
NICKEL (Aug)	669	685	709	728	750

### ENERGY

COMMDITY (MCX)	S2	S1	PIVOT POINT	R1	R2
CRUDE OIL (Aug)	2910	3000	3130	3270	3360
NATURAL GAS (Aug)	167	173	181	186	192

### DATE TALKS : TODAY'S ECONOMIC DATA :

Employment Cost Index, Chicago PMI, Revised UoM Consumer Sentiment, Revised UoM Inflation Expectations.





Registered Office

Indira House, 3rd Floor, 5 Topiwala Lane,  
Opp. Lemington Road Police Station, Grant Road (East), Mumbai - 400007.

Corporate Office

'Ramavat House' E-15, Saket Nagar, Indore - 452018 (M.P.)

Customer Care

Tel: +91-731-4097170/ 71/ 72/ 73/ 74 M. +91 93031 72345

Email: [customercare@indiratrade.com](mailto:customercare@indiratrade.com) [www.indiratrade.com](http://www.indiratrade.com)



INSTITUTIONAL DEALING UNIT

Africa House, 5, Topiwalla Lane, Lamington Road, Mumbai, 400007

Tel: +91 22 30080678 Fax : +91 22 23870767 Email : [ie@indiratrade.com](mailto:ie@indiratrade.com)

**Disclaimer**

This report is for private circulation within the Indira Group. This report is strictly confidential and for information of the selected recipient only and may not be altered in any way, transmitted to, copied or distributed, in part or in whole, to any other person or to the media or reproduced in any form. This report should not be construed as an offer or solicitation to buy or sell any securities or any interest in securities. It does not constitute a personal recommendation or take into account the particular investment objectives, financial situations, or any such factor. The information, opinions estimates and forecasts contained here have been obtained from, or are based upon, sources we believe to be reliable, but no representation of warranty, express or implied, is made by us to their accuracy or completeness. Opinions expressed are our current opinions as of the date appearing on this material only and are subject to change without notice.